

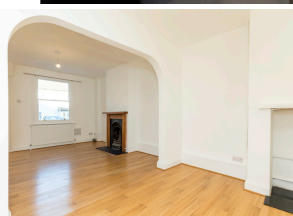


Sussex Letting Centre

Oak Tree Cottages, Mill Road

Burgess Hill, RH15 8DT

£1,450 PCM





£1,450 PCM



Features

- New Kitchen
- Fully redecorated and new flooring
- Feature Fireplace
- Courtyard
- Pets Considered
- EPC Rating C
- MSDC council tax band C

Description

REDECORATED THROUGHOUT - NEW KITCHEN - NEW FLOORING & CARPETS - SOUTH FACING COURTYARD. Sussex Letting Centre are delighted to offer a two-bedroom, Victorian terraced cottage, conveniently situated in a lane off Mill Road, located within a short distance from both the town centre and Burgess Hill mainline railway station.

In brief, this well presented cottage comprises of, entrance porch leading into an open plan lounge/ kitchen-diner. The lounge benefits from a Victorian style feature fireplace & new bamboo flooring, new kitchen with built in oven, induction hob & spaces for appliances, good size downstairs bathroom with shower over bath, inner hall leading to the rear patio.

Upstairs, which has new carpets throughout, main double bedroom to the front & a second double bedroom to the rear with an open wardrobe.

South facing courtyard garden to the rear. Double glazed sash window & gas central heating.

Unfurnished. Available Now.

EPC rating C / Council tax band C

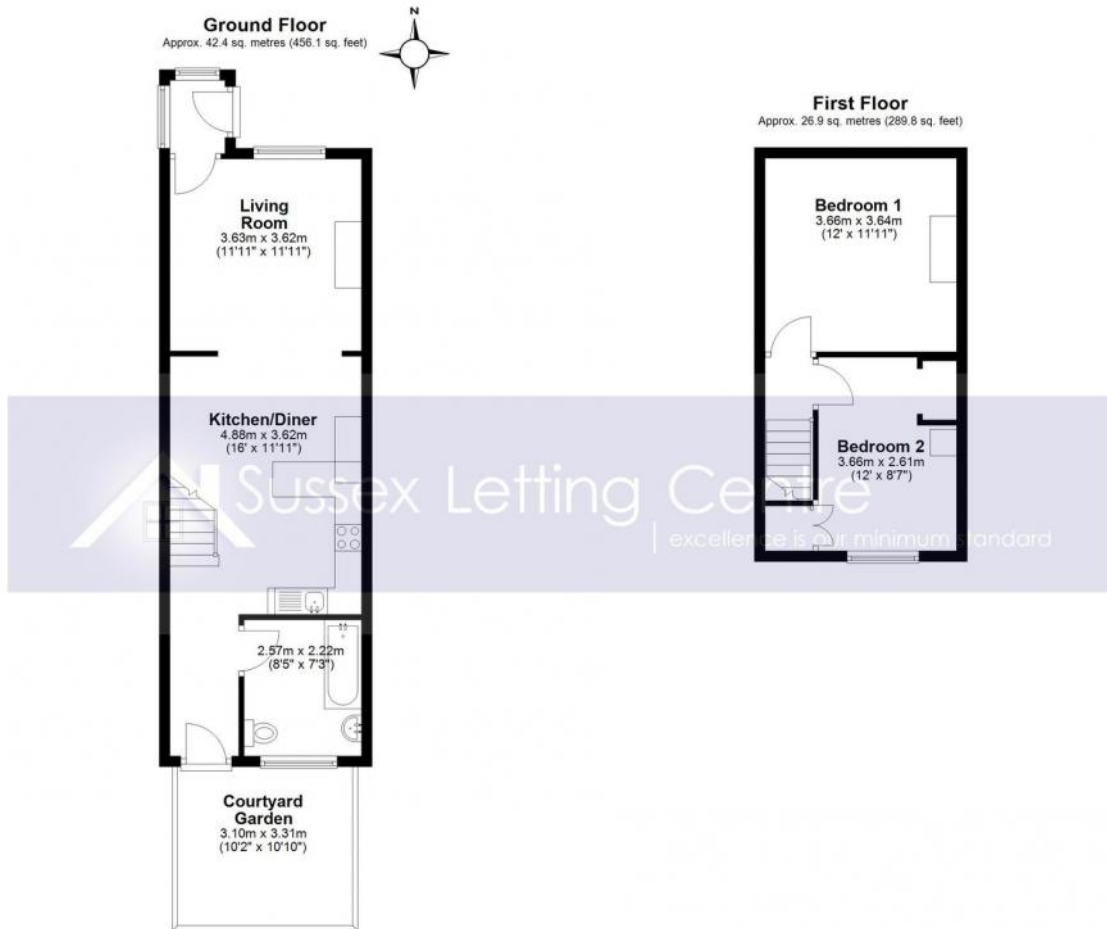
Based on the advertised rent a holding deposit of £334.61 is required to reserve this property, total deposit payable is £1673.00



£1,450 PCM



Floor Plan



Whilst every attempt has been made to ensure the accuracy of the floor plan contained here, measurements of doors, windows, rooms and any other items are approximate and no responsibility is taken for any error, omission or mis-statement. This plan is for illustrative purposes only and should be used as such by any prospective purchaser. The services, systems and appliances shown have not been tested and no guarantee of their operability or efficiency can be given.
Plan produced using PlanUp.