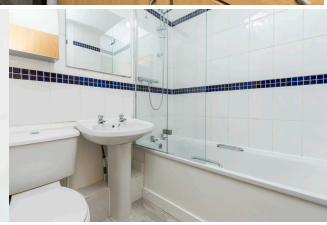
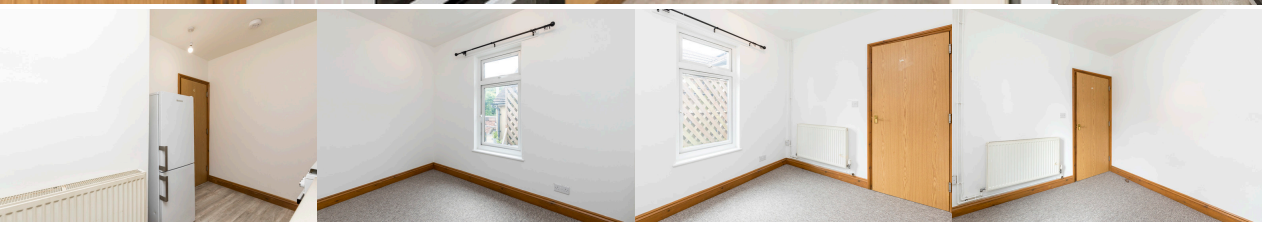


£995 PCM



£995 PCM

Features

- Redecorated & New carpets
- Office/Dressing room
- Gas Central Heating
- Double Glazing
- Opposite St Johns Recreational Park
- Council tax Band B
- EPC Rating C

Description

Sussex Letting Centre are pleased to bring to market a charming, one bedroom, first floor maisonette with the added benefit of an office/dressing room, located opposite St Johns Park and within a few minutes walk to Burgess Hill town centre and mainline station. REDECORATED & NEW CARPETS.

The accomodation comprises of its own entrance with stairs leading to the first floor landing, kitchen with appliances to include fridge/freezer & washing machine, Lounge peacefully located to the rear of the property, office/dressing room overlooking St Johns Park, bathroom with shower over the bath, stairs leading to a good size double bedroom, gas central heating & double glazed.

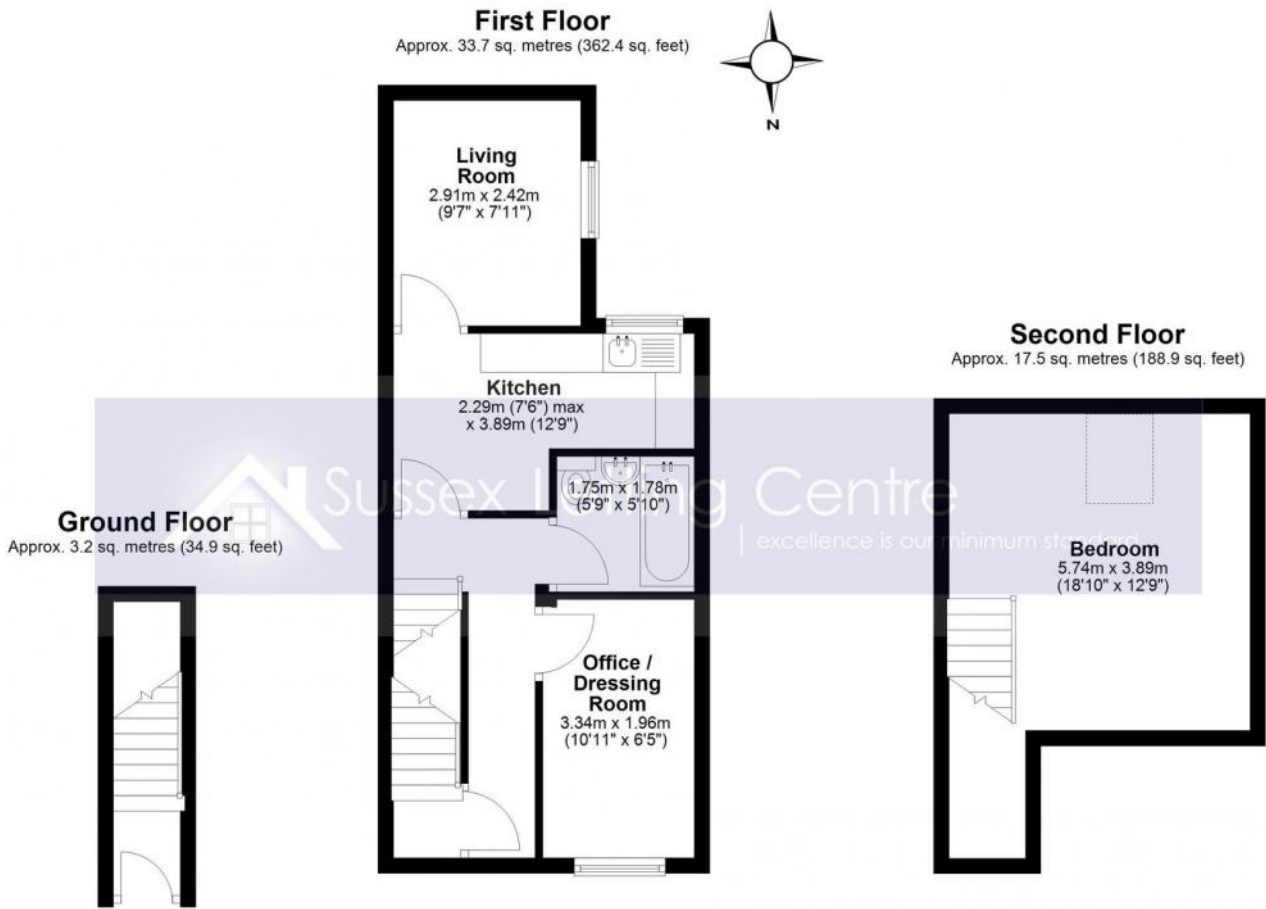
UNFURNISHED / AVAILABLE NOW

Based on the advertised rent a holding deposit of £229.61 is required to reserve this property. Min Term 12 months. Total deposit payable is £1148.00

£995 PCM



Floor Plan



Whilst every attempt has been made to ensure the accuracy of the floor plan contained here, measurements of doors, windows, rooms and any other items are approximate and no responsibility is taken for any error, omission or mis-statement. This plan is for illustrative purposes only and should be used as such by any prospective purchaser. The services, systems and appliances shown have not been tested and no guarantee of their operability or efficiency can be given.
Plan produced using PlanUp.