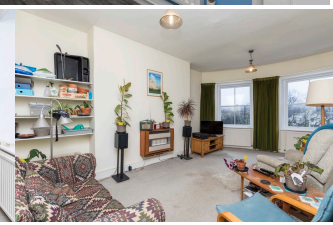
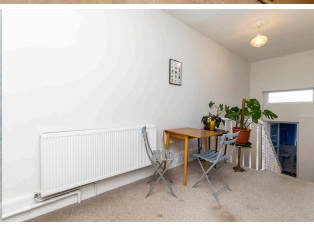
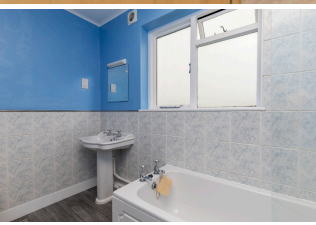
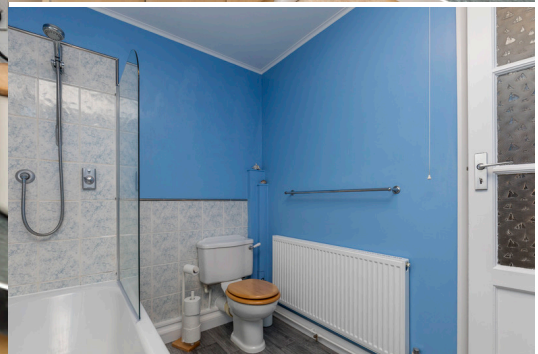


£1,350 PCM



£1,350 PCM



## Features

- Large accomodation
- Split level
- Great views
- Pets considered
- Grade II listed
- Parking Permit Zone Y
- Council Tax band B
- EPC Rating C

## Description

Sussex Letting Centre are pleased to offer a grade II listed, large, one bedroom, split level top floor flat, ideally located within a one minute walk to the vibrant Seven Dials, with easy access to all areas of the city including the beach and only a 10 minute walk to Brighton station.

This large, bright and airy accommodation, which offers great views, in brief comprises of: secure entry, stairs to the second floor, on entrance there are stairs to the first level where you will find a good size bathroom with digital shower over the bath, second level, which is a great space to use as an office or dining area with the added benefit of a storage cupboard.

Galley style kitchen with appliances which include a washing machine & under counter fridge & freezer, large lounge/diner offering an abundance of light , substantial double bedroom peacefully located to the rear with built in airing cupboard & double wardrobe. Gas central heating.

Pets Considered

UNFURNISHED. Available from 6th April 2024.

Parking: BHCC permit zone Y

Council tax band B / EPC Rating C

Based on the advertised rent a holding deposit of £346.15 is required to reserve this property. Min Term 12 months.  
Total deposit payable is £1557.00



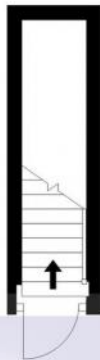
£1,350 PCM



## Floor Plan

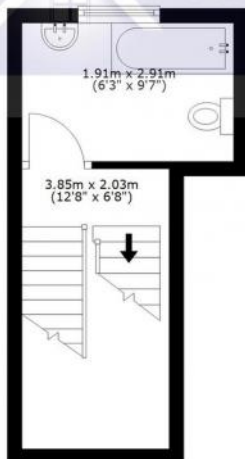
### Entrance on Second Floor

Approx. 3.4 sq. metres (37.0 sq. feet)



### Split Level Second Floor

Approx. 13.6 sq. metres (146.1 sq. feet)



### Third Floor

Approx. 59.9 sq. metres (645.0 sq. feet)

