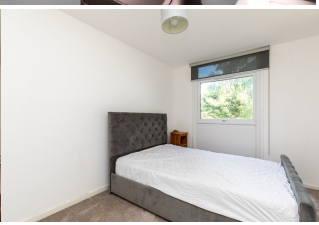
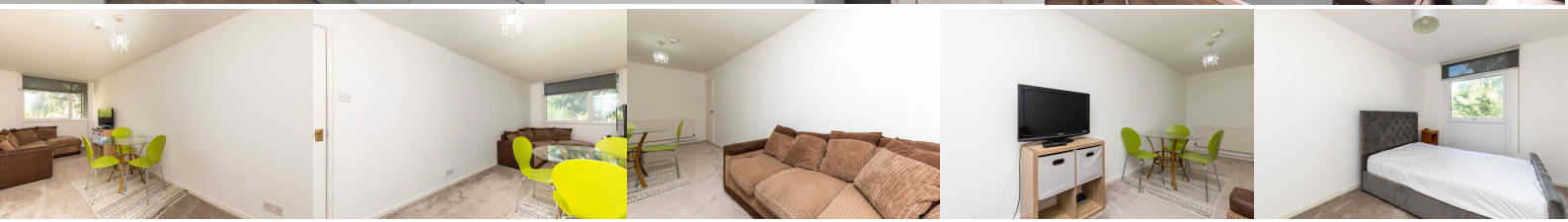
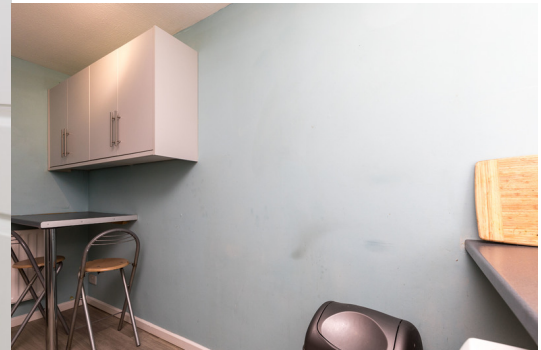


£925 PCM





**£925 PCM**

## Features

- Spacious
- Communal parking
- Gas Central Heating
- Double Glazed
- EPC Rating C
- Council Tax Band B

## Description

Sussex Letting Centre are pleased to offer a spacious, one bedroom first floor flat located close to local amenities, within a short distance to Littlehaven train station, Horsham's town centre and excellent access to the M23 Motorway.

The accomodation comprises of, stairs to the first floor, entrance hall with storage cupboard, lounge/diner, kitchen/breakfast room with washing machine & fridge freezer, double bedroom, bathroom with shower over bath & storage cupboard, communal parking.

Gas central heating & double glazing throughout.

The property is offered part furnished or unfurnished.

EPC Rating C

Council Tax Band B

Available early October

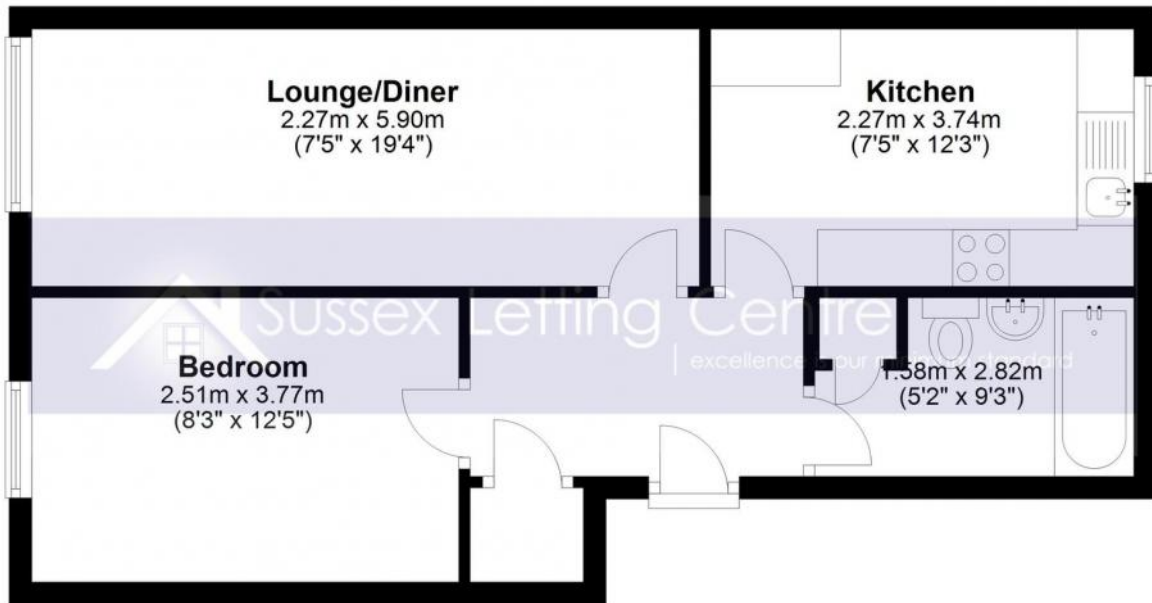
£925 PCM



## Floor Plan

### First Floor

Approx. 43.0 sq. metres (462.5 sq. feet)



Total area: approx. 43.0 sq. metres (462.5 sq. feet)

Whilst every attempt has been made to ensure the accuracy of the floor plan contained here, measurements of doors, windows, rooms and any other items are approximate and no responsibility is taken for any error, omission or mis-statement. This plan is for illustrative purposes only and should be used as such by any prospective purchaser. The services, systems and appliances shown have not been tested and no guarantee of their operability or efficiency can be given.

Plan produced using PlanUp.