

£1,375 PCM



£1,375 PCM



Features

- Residential area close to rural walks
- Juliet balcony to the lounge/diner & main bedroom
- Allocated Car Port & visitors parking
- Bike Store
- Gas Central Heating
- Views of parkland & Ditchling Common
- EPC rating B
- Council tax band C - Mid Sussex District Council

Description

Sussex Letting Centre are delighted to offer a well presented, modern, two bedroom, second floor apartment situated in the sought after Charles Church Development off of Kingsway, with views from the lounge and bedrooms overlooking parkland & Ditchling Common.

In brief, the property comprises of: Secure entry, stairs to the second floor, bright entrance hall with large storage cupboard, modern, open plan kitchen with appliances which include Fridge-Freezer/Washing machine/Dishwasher, good size lounge with Juliet balcony, main bedroom with fitted mirrored wardrobes & Juliet balcony, second bedroom, spacious modern bathroom with power shower over bath, Secure Bike store, allocated car port & visitors parking.

EPC Rating B. Council Tax band C

Unfurnished. Available from 16th October

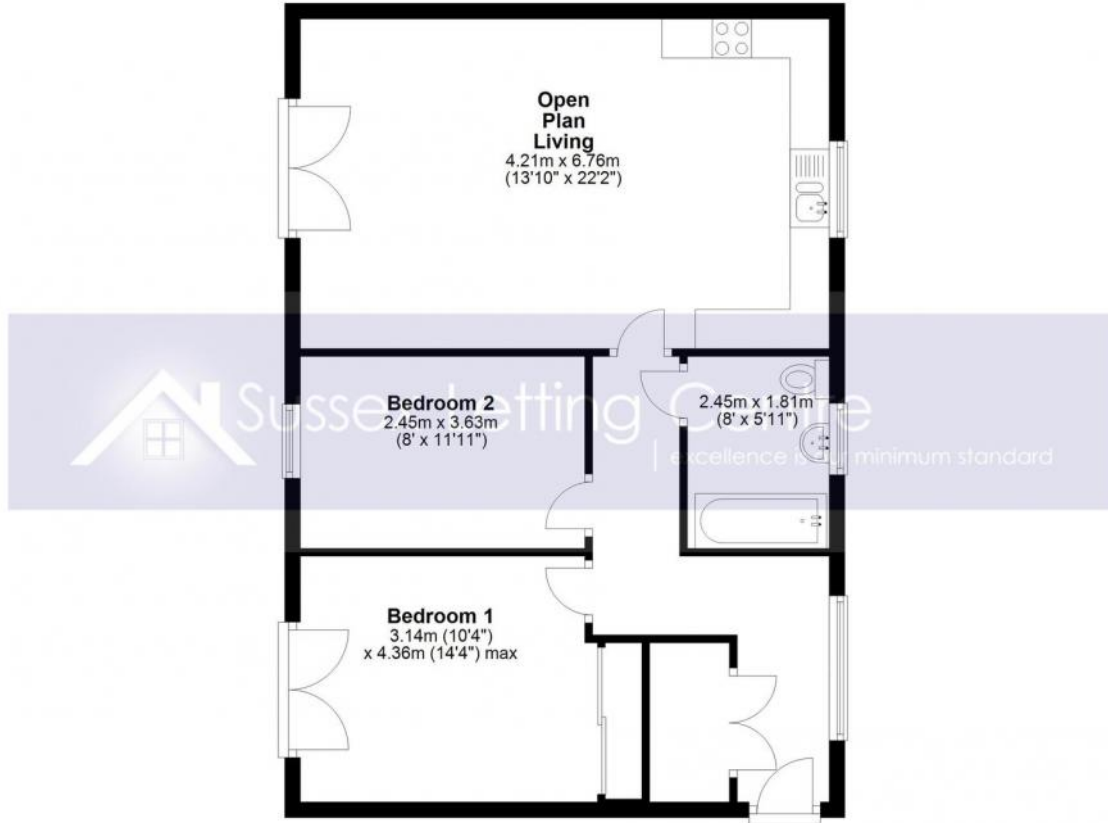
£1,375 PCM



Floor Plan

Second Floor

Approx. 67.6 sq. metres (727.7 sq. feet)



Whilst every attempt has been made to ensure the accuracy of the floor plan contained here, measurements of doors, windows, rooms and any other items are approximate and no responsibility is taken for any error, omission or mis-statement. This plan is for illustrative purposes only and should be used as such by any prospective purchaser. The services, systems and appliances shown have not been tested and no guarantee of their operability or efficiency can be given.
Plan produced using PlanUp.