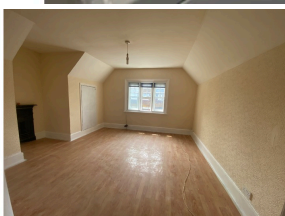


£1,025 PCM



**£1,025 PCM**

## Features

- Allocated Parking Space
- Undergoing Full Redecoration
- New Stair Carpet to be Fitted
- Large Bedrooms
- Town Centre Location
- Gas Central Heating

## Description

Sussex Letting Centre are pleased to offer a spacious two double bedroom first floor maisonette in the town centre with the added benefit of an allocated parking space to the rear.

The property has wooden flooring throughout and comprises of a secure entry system, stairs to the first floor, spacious entrance hall, lounge with feature fireplace, fitted kitchen with a fridge and a space for a washing machine, modern bathroom with shower over bath, stairs leading to a spacious landing, two good size double bedrooms both with feature fireplace, gas central heating, secondary double glazing, **ALLOCATED PARKING SPACE**. Council tax band B.

Unfurnished. Available early July