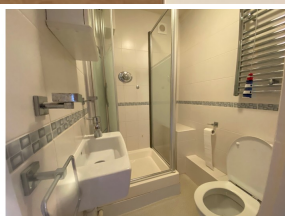
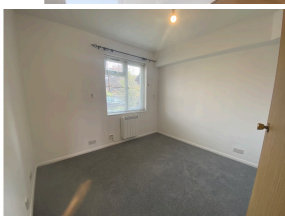


£950 PCM



£950 PCM

Features

- Ground floor maisonette
- Private patio
- Allocated parking to the front
- large built in wardrobe
- Pets Considered
- Electric heating
- 15 Minute walk to Littlehaven Train Station
- EPC Rating C
- Council Tax Band B

Description

Sussex Letting Centre are pleased to offer a well presented one-bedroom ground floor maisonette close to local amenities and easy access to the A24, A281 & M23, with the added benefit of a private patio area & allocated parking to the front.

The property offers an open plan living area, modern kitchen with an attractive range of cream units & spaces for appliances, storage cupboard, inner hall housing a good size wardrobe, shower room, double bedroom, one allocated parking space and a private patio area to the front, electric heating.

Pets considered

UNFURNISHED. AVAILABLE from 4th June 2024.

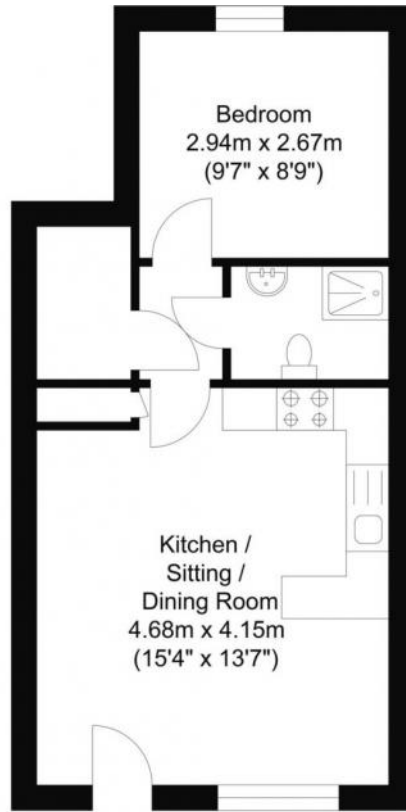
Council Tax band B / EPC Rating C

Based on the advertised rent a holding deposit of £219.23 is required to reserve this property. Min Term 12 months.
Total deposit payable is £1096.00

£950 PCM



Floor Plan



Approximate Floor Area
366.72 sq ft
(34.07 sq m)

Approximate Gross Internal Area = 34.07 sq m / 366.72 sq ft
Illustration for identification purposes only, measurements are approximate, not to scale.
Copyright GDImpact 2019