

£1,150 PCM



£1,150 PCM

Features

- GARAGE + 2 allocated parking spaces
- Redecorated throughout
- New Carpets
- Downstairs Cloakroom
- Two double bedrooms
- Shed with power & heating
- Pizza Oven
- Outside taps to front & rear

Description

Sussex Letting Centre are delighted to offer to market a well presented, two double bedroom terraced house with a GARAGE, situated on the popular Western side of town, offering easy access to the A23, St Paul's College and the Triangle Leisure Centre.

The property has been redecorated throughout and is awaiting new carpets to be fitted.

To the downstairs this lovely house comprises of Entrance hall, downstairs cloakroom, kitchen with appliances to include washing machine and fridge freezer, lounge/dining room with feature electric fireplace, and patio doors leading out to a low maintenance rear garden which benefits from a shed with power & heating, a gas BBQ and pizza oven.

The stairs lead to two double bedrooms, one with a built in wardrobe and airing cupboard, modern family bathroom with shower over bath and a storage cupboard.

Other benefits include a single garage with power, allocated parking spaces, front & rear outside taps, gas central heating.

PETS CONSIDERED.

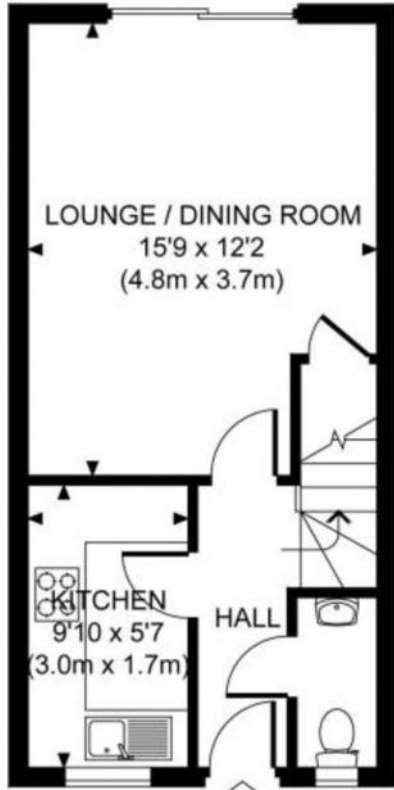
Unfurnished, available EARLY FEBRUARY.

£1,150 PCM

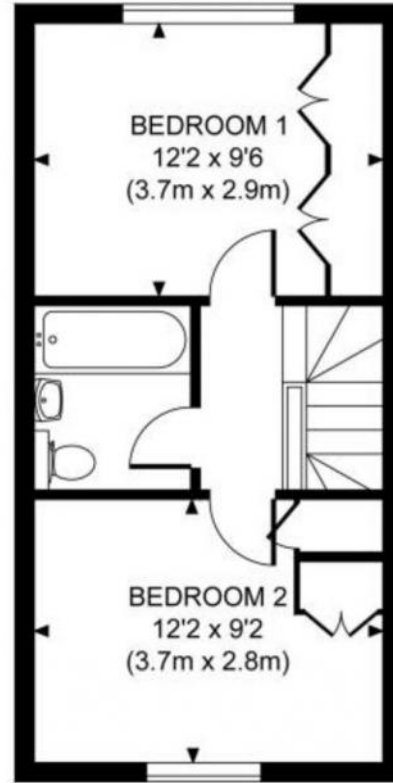


Floor Plan

Approximate Gross Internal Area
581 sq ft / 54.0 sq m



GROUND FLOOR



FIRST FLOOR