

£1,250 PCM

2  1  1 



**£1,250 PCM**

## Features

- Built 2021
- Juliet balcony to the lounge/diner & main bedroom
- Quality vinyl flooring throughout
- Allocated Car Port & on street parking
- Views of parkland & Ditchling Common
- Bike store
- EPC rating B
- Council tax band C - Mid Sussex District Council

## Description

Sussex Letting Centre are delighted to offer a very well presented, modern, two bedroom second floor apartment situated in the sought after 'The Croft' Development located off Kings Way, finished to a high standard and with views from the lounge and bedrooms overlooking parkland & Ditchling Common.

In brief, the property comprises of a telecom entry system, well-maintained communal hallway, stairs to the second floor leading into a bright spacious entrance hall with large storage cupboard, modern, open plan kitchen with appliances which include Fridge-Freezer/Washing machine/Dishwasher, good size lounge/diner with Juliet balcony, main bedroom with fitted mirrored wardrobes & Juliet balcony, second bedroom, spacious modern bathroom with power shower over bath, allocated car port, bike store. This superb apartment has the added benefit of quality vinyl flooring throughout. Gas central heating & fully double glazed.

**VIEWING HIGHLY RECOMMENDED**

Unfurnished. Available Early June

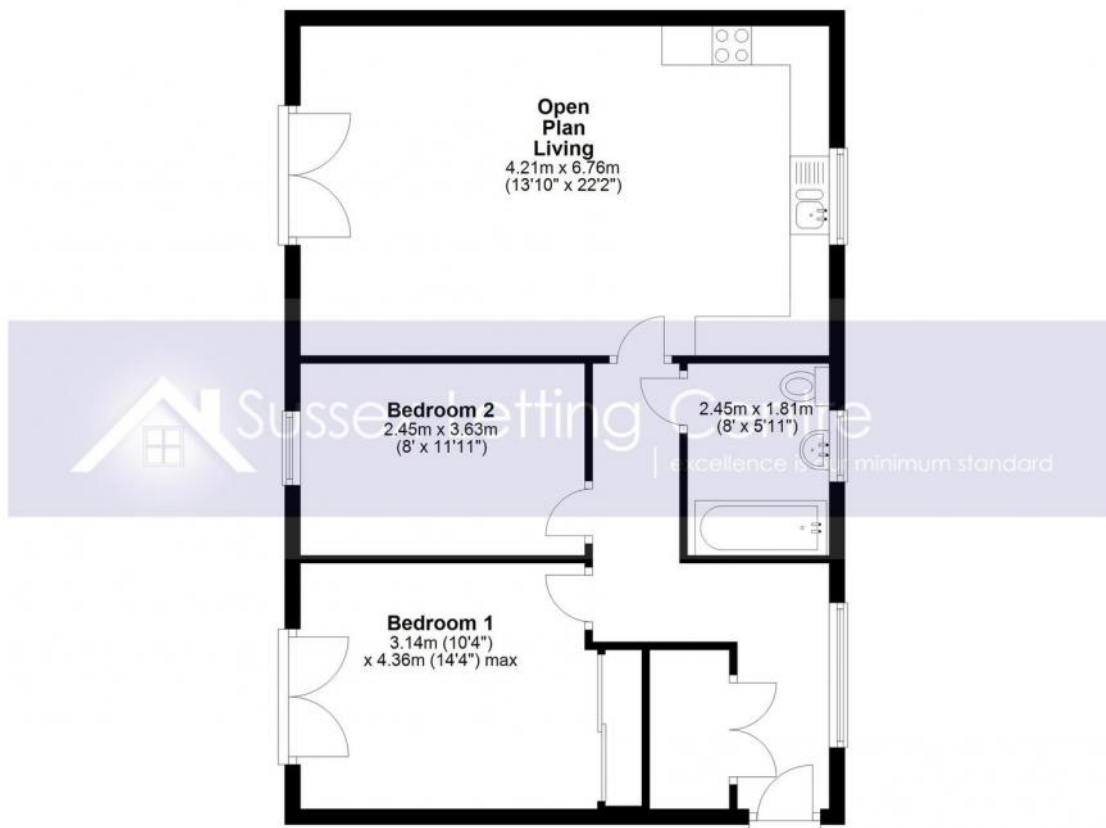
£1,250 PCM



## Floor Plan

### Second Floor

Approx. 67.6 sq. metres (727.7 sq. feet)



Whilst every attempt has been made to ensure the accuracy of the floor plan contained here, measurements of doors, windows, rooms and any other items are approximate and no responsibility is taken for any error, omission or mis-statement. This plan is for illustrative purposes only and should be used as such by any prospective purchaser. The services, systems and appliances shown have not been tested and no guarantee of their operability or efficiency can be given.  
Plan produced using PlanUp.